

SCOPEXL™



MAIN FEATURES

- Made of aluminum alloy and high-density polyethylene (HDPE).
- Patented locking system Twin Safety Lock (TSL).
- Ergonomic.
- Adjustable length to a maximum of 2,010 mm (4 different positions).
- Equipped with pins for the application of quick-release restraints.
- Folds and divides into 2 parts.
- Compatible for patient transfer to X-Ray and MRI rooms.
- Easy to sanitize.
- Available colors: yellow, red, green and grey.
- Compatible with the pediatric immobilization and transport device Pedi-Sleeve.

TECHNICAL SPECIFICATIONS

Maximum length	2,010 mm	Size when folded	1,200x430x80 mm
Minimum length	1,647 mm	Weight	8 kg
Maximum width	432 mm	Load capacity	227 kg

AVAILABLE MODELS

Description	Code
Kit with SCOPEXL™ , head immobilizer B-LOCK with storage case and 4 straps model 773	KIT-SCOPEXL
EMERGENCY KIT with SCOPEXL™ , head immobilizer B-LOCK, cervical collar WIZLOC, 4 straps model 773, blanket FW100, carrying case	21-00026

OPTIONAL ACCESSORIES

Description	Code
Head immobilizer	21-00022
Cervical Collar WIZLOC 449-i	0822074
Restraint model 773, two-piece, metal buckle/clip, black	0314122
Fastrap Restraints	770-E
Vertical Fastener (EN 1789)	561-V
Emergency carrying case	FBI 300000
Carrying and storage case for 365-E	10-9900-005

EMERGENCY KIT

A bag/backpack to transport material necessary for the immobilization and rescue of an injured patient far from emergency vehicles.

Contains:

- 1 **SCOPEXL™** stretcher
- 1 Head immobilizer B-lock
- 1 Cervical collar WizLoc
- 4 Straps model 773
- 1 Single-patient high protection blanket

HEAD IMMOBILIZER B-LOCK

Designed especially for **SCOPEXL™**, guarantees a correct immobilization of the head and neck of the patient.

MODEL 773 RESTRAINTS

Reduced time of application with the quick-release, automotive-type, coated metal buckles and the speed-clips for quick attachment to **SCOPEXL™**.

561-V FASTENER

Created to fasten the **SCOPEXL™** stretcher in vertical position.
Tested in accordance with EN1789.



SCOPEXL™



FERNO S.R.L. - Via B. Zallone n.26,
Pieve di Cento 40066 (BO) Italy - Tel. 051 6860028

info.it@ferno.com - www.ferno.it



SCOPEXL™



SCOPEXL™

Always together with the patient from the moment of immobilization, during transport to the Emergency Room and into diagnostic departments and operating rooms... and also during transfer from one emergency vehicle to another.

EASY TO USE

Allows the operator to perform all loading maneuvers on polytraumatized patients, even in difficult situations. Only two operators are required to immobilize the patient on any type of terrain. Using **SCOPEXL™** is easy, fast and safe.

COMFORT

The concave shape fits the patient perfectly and comfortably, ensuring more points of contact for the body than a backboard.

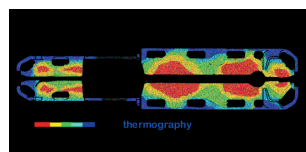
ERGONOMICS 3

It has been designed and manufactured according to the most advanced ergonomic criteria and ensures that the operator maintains the correct posture during all patient rescue and transport maneuvers. Equipped with 4 lifting handles (2 head-end and 2 foot-end).

SAFETY 1

The **patented** Twin Safety Lock (TSL) system prevents the **SCOPEXL™** stretcher opening accidentally.

SCOPEXL™ can be easily sanitized, thanks to its easily accessible parts.



THERMAL ISOLATION

SCOPEXL™ guarantees immediate and effective thermal isolation, thanks to its special plastic material.

COMPACT AND EASY TO TRANSPORT 2

The stretcher can be adapted to any patient, up to a maximum length of 2,010 mm.

It is lightweight and compact, making it easy to fold and transport. It can be stowed in an ambulance, occupying minimal space.

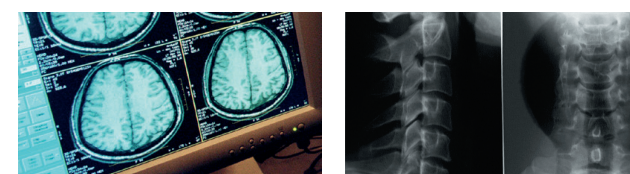
CLINICAL STUDIES

Studies carried out by the **Center for Emergency Medicine** at the University of Pittsburgh demonstrate that the degree of spinal immobilization with the **SCOPEXL™** stretcher is equivalent to that of a backboard. They also demonstrate that fewer maneuvers by the operator are needed, causing less stress to the spine. RISK FREE!

CERTIFICATION

UNI EN 1865.

Fasteners designed for **SCOPEXL™** and tested according with **UNI EN 1789.** Non magnetic.



DIAGNOSTICS

SCOPEXL™ can be used during X-ray examinations for polytraumatized patients. The absence of diamagnetic, paramagnetic or ferromagnetic materials means it can be used for MRI scans.



The **SCOPEXL™** stretcher is a **SAFETY 4 YOUR BACK** device. **SAFETY 4 YOUR BACK** devices are specifically designed to protect a healthcare professional's back.

